



Side-by-side into adventure

From rocky mountains to sandy planes to wet grasslands, the outdoors are one big playground - if you've got the right vehicle. With the Rhino 700, you and a friend can enjoy it all.

Its powerful 686cc engine gives the kind of unrelenting, high-traction torque needed to pull out of the stickiest situations. Independent double wishbone suspension and On-Command® drive system take the strain out of a long intense riding day. It's economical with fuel, needs minimal maintenance, and has a roomy cargo bed for supplies.

With the Rhino, you and your friend will experience the adventure of your lives. Special edition Satin Black comes with aluminium wheels and sun top as standard.

- ▶ Liquid-cooled 686cc, 4-stroke engine with EFI
- ▶ Fuel-efficient & low maintenance
- ▶ Ultramatic® transmission dual-range and reverse
- ▶ On-Command® 2WD/4WD drive with differential lock
- ▶ Fully independent 4-wheel suspension
- ▶ Dual hydraulic front/rear disc brakes
- ▶ Big 30-litre fuel tank for hours of off-road fun
- ▶ Comfy interior with automotive style controls
- ▶ Multifunction digital LCD display
- ▶ Tough roto-molded doors keep mud, water & dirt out
- ▶ Stamped steel dump bed with latch
- ▶ Adjustable anti-cinch seatbelts for added comfort



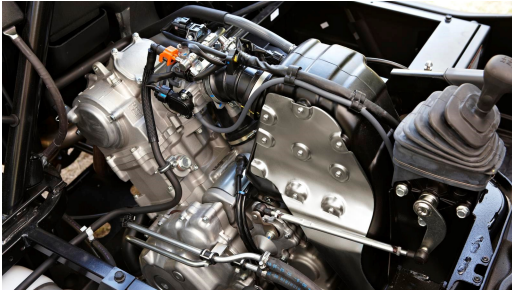
Share the load - or the fun together

Whether you're a busy pair of outdoor workers with a large area to cover, or just two friends eager for great outdoor adventures - Yamaha side-by-side vehicles let you head into the wilderness together.

Rugged on the outside, housing sophisticated Yamaha technologies and comfort on the inside and very user-friendly, Rhinos are also pleasingly economical with fuel, and don't require much maintenance to keep them running.

Deep bucket seats, adjustable seatbelts and conveniently placed grab-rails, give all-day comfort and true convenience is a given out on the trails. And with the roomy cargo bed, you can make the trip as long as you want.





Precision engine design

The liquid-cooled, 686cc 4-stroke engine used in the Rhino 700 is designed to give you high levels of torque at low and mid range rpm. The result is increased traction on all kinds of terrain. Yamaha's Electronic Fuel Injection system provides impressively smooth power and auto-compensates for altitude.

Effortless Ultramatic® transmission

A fully automatic gearbox - with high and low drive ranges - contributes to the effortless, exhilarating experience of driving the Rhino 700.



OnCommand® 2WD, 4WD & front-locked differential 4WD

When the trail gets tough, switch from 2WD to 4WD - or front locked-differential 4WD - at the push of a button. This puts every ounce of engine power straight to the ground.

Independent double wishbone suspension

Fully independent, double wishbone suspension with adjustable preload ensure that tyres stay in contact with the ground longer, providing both comfort and traction.



Dual hydraulic front/rear disc brakes

Superior braking performance is delivered by dual hydraulic front and rear disc brakes. The automotive-style parking brake lever makes sure the Rhino stays where you left it.

Digital Information Panel

A digital instrument panel boasts a multifunction LCD display featuring speedometer, odometer, dual tripmeters, hour meter, 4WD status, transmission position, clock and fuel gauge.



<i>Engine</i>	
Engine type	Single cylinder, liquid-cooled, 4-stroke, SOHC, 4-valves
Displacement	686cc
Bore x stroke	102.0 mm x 84.0 mm
Compression ratio	9.2 : 1
Lubrication system	Wet sump
Fuel system	Electronic Fuel Injection
Ignition system	TCI
Starter system	Electric
Transmission system	Yamaha Ultramatic® V-belt
Drive system	On-Command® 2WD, 4WD with Diff-lock
Final transmission	Shaft

<i>Chassis</i>	
Front suspension system	Independent double wishbone, 185 mm wheel travel, 5-way preload adjustment
Rear suspension system	Independent double wishbone, 185 mm wheel travel, 5-way preload adjustment
Front brake	Dual hydraulic disc
Rear brake	Dual hydraulic disc
Front tyres	AT25x8-12
Rear tyres	AT25x10-12

<i>Dimensions</i>	
Overall length	2,885 mm
Overall width	1,385 mm
Overall height	1,853 mm
Seat height	818 mm
Wheelbase	1,910 mm
Minimum ground clearance	280 mm
Wet weight (including full oil and fuel tank)	540 kg
Fuel capacity	30.0 litres
Oil capacity	3.0 litres

<i>Loading limits</i>	
Cargo bed	181 kg

The specification and appearance of Yamaha products will be varied from time to time without notice, and those shown here are for illustrative purposes only and are not contractual descriptions of products. Some models are shown with optional accessories. Yamaha Side-by-Side Vehicles are built to operate within their design limits. Safe towable weights, together with maximum carrying capacity are identified in the owner's manual if applicable. For durability, reliability, but most important of all, operator and passenger safety, under no circumstances should the recommended capacities be exceeded. Our Side-by-Side Vehicles are recommended for use only by riders of 16 years and older. Always avoid paved surfaces. Side by Side Vehicles are designed for unpaved surfaces only. Riding on paved surfaces may seriously affect handling and control and can cause loss of control. Always wear a helmet, eye protection, and protective clothing. Always wear a seatbelt. Never engage stunt riding. Riding and alcohol/drugs don't mix. Avoid excessive speed. And be particularly careful on difficult terrain. Please 'tread lightly': always ride in a responsible manner, respecting the environment as well as country and local laws. Yamaha recommends that all Side-by-Side Vehicle riders take an approved training course. For safety and training information, see your dealer or call your Yamaha Distributor in your country. All Side-by-Side Vehicles come with a 12-month Limited Factory Warranty. See your dealer for details.



Rhino 700 / SE

www.yamaha-motor.eu

Colours



Satin Black



Solid Green

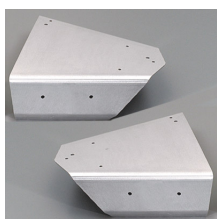


Red Spirit



Yamaha Blue

Featured accessories



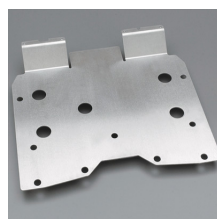
A-Arm Guards Front
Rhino - Aluminium



A-Arm Guards Rear
Rhino - Aluminium



Class 2 Trailer Hitch



Engine/Frame Skid
Plate Rhino



Folding Windshield
Rhino - Clear



Front Bash Plate
Rhino

For all Rhino 700 / SE accessories go to the website, or check your local dealer



The Yamaha Chain of Quality

Yamaha technicians are fully trained and equipped to offer the best service and advice for your Yamaha product. For this reason, Yamaha strongly recommends visiting an official Yamaha dealer for all your service requirements.

Yamaha Genuine Parts & Accessories are especially developed, designed and tested for our Yamaha product range. Yamaha also recommends the use of Yamalube®, our own range of high-tech lubricants – the lifeblood of Yamaha engines. They are developed to carry on working effectively, no matter where you ride.

Besides functional and style accessories, Yamaha offers a range of high quality, innovative riding gear designed to keep you comfortable and protected. An extensive range of casual wear is also available. For more information go to:

www.yamaha-motor-acc.com



Experience more of the
Yamaha Rhino 700 / SE with your
mobile

Yamaha Motor Europe
Koolhovenlaan 101
1119 NC Schiphol-Rijk
The Netherlands